

TRICONE

100% FDI (Foreign Direct Investment)

The
Signature
of a global lifestyle...

Tricone City, Indore



*"Spend a lifetime
.....In the lap of nature"*



*Welcome to...
...a global life style*

Tricone City, Indore is a residential township , sprawling over 150 acres of green area located on main Indore Khandwa road. With well planned parks, state-of-art amenities, open green spaces, jogging tracks and wide roads dotted with trees, Tricone City brings to you an unparalleled living experience in an environment of abundant greenery and a naturally unspoilt landscape.

Excellent Location

Luxurious Villas

Independent Plots

Highrise Apartments

Gated Community

Commercial Centre

**School, Multiplex
Club, Swimming Pool**

Tricone City, Indore



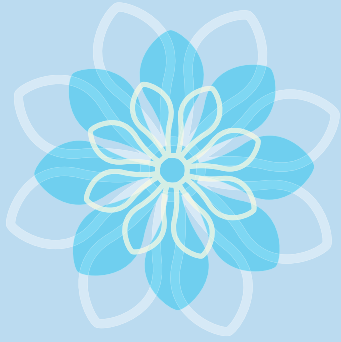
Dreams pass into the reality of action. From the action stems the dream again and it's independence produces the highest form of living.





Project Features

- Lush green gated community township spread over 150 acres.
- Wide Sprawling Roads with green landscaped Corridors.
- Well manicured green parks and water bodies.
- All underground services.
- Uninterrupted Power-backup System for telecommunication and Entrance Gate Operation.
- Multi tier security system.
- Power backup for common services.
- Environment friendly rainwater harvesting system.



A COMPLETE LIVING EXPERIENCE

Tricone City aims at creating a self-contained world where all your needs will be met on location.

- Commercial Complex
- A dedicated clubhouse for the residents
- Community Centre
- Round the clock security
- Secondary School
- Health Centre, Post offices and Banks



Food Court



Tennis Court



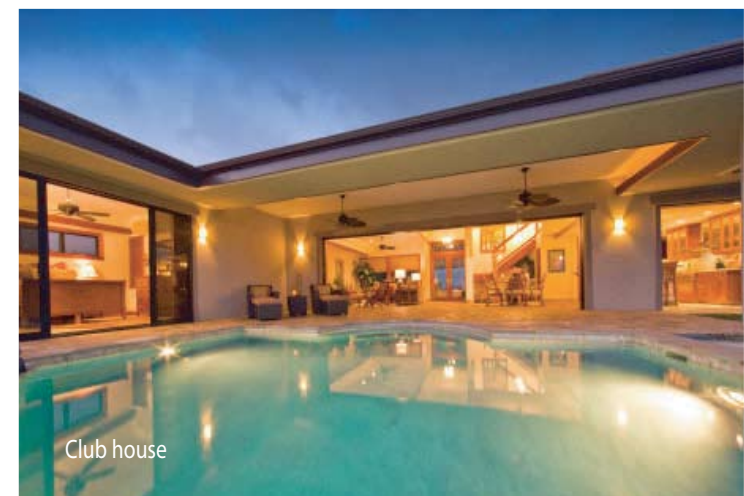
Commercial Centre



Multiplex

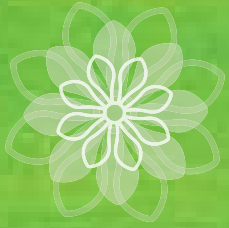


School



Club house



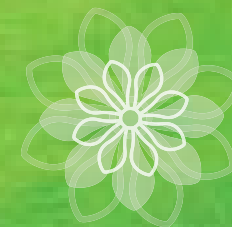


Come....experience the joy of living

Lush green landscaping around the CLUB HOUSE
with open air theatre for live performances
coupled with outdoor amenities like
Tennis Court,Swimming pool,kids play area etc

*The OVAL
at Tricone City, Indore*





State-of-art HIGHRISE TOWERS overlooking the lavish central greens and beautifully landscaped central facility area.



COMMERCIAL COMPLEX with space allocation for retail outlets ,mutiplex & lavish food courts

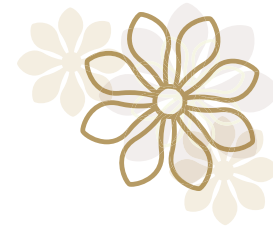
CENTRAL ROTARY - to compliment the oval

Perspective view of group housing at central ellipse of Tricone C ity





Affordable Luxury with impeccable functionality, forms the core strength of Tricone City



Our endeavour is to provide amenities for quality life for you and your family, which is why only the best designs with best quality finishes, fixtures & attention to minute details go into a space that you can call home...







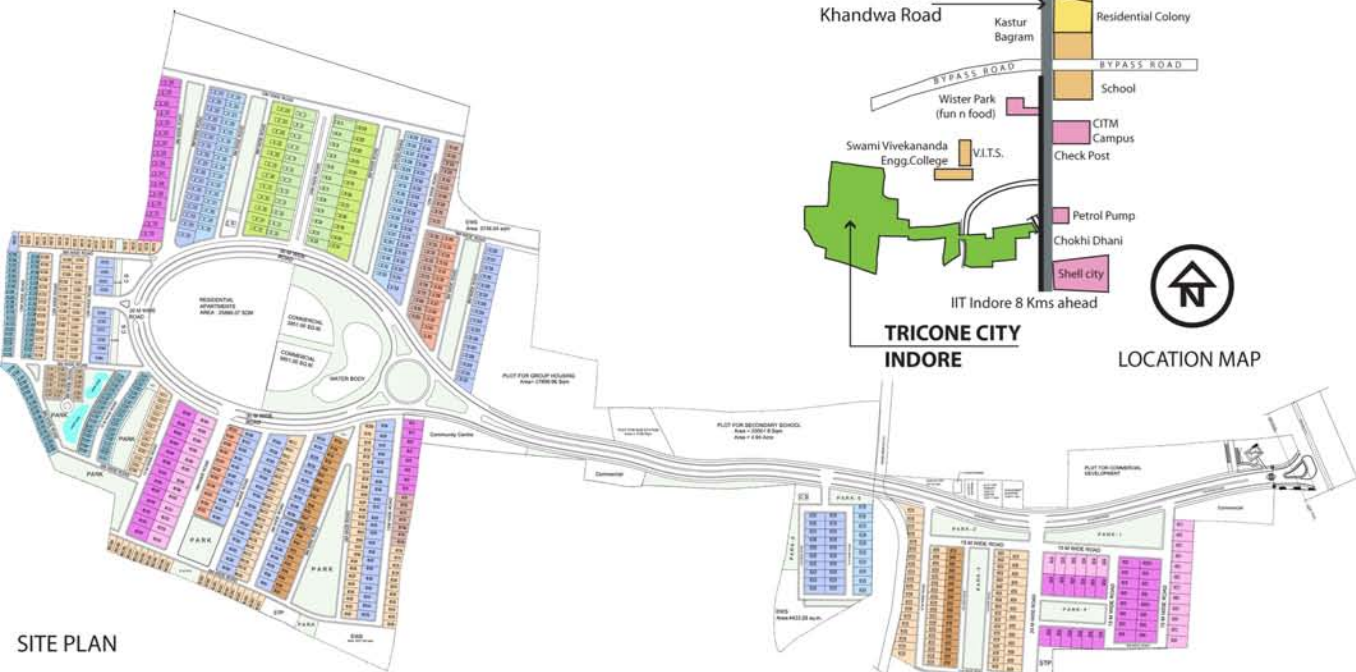
About us

Tricone Projects India Ltd.

Tricone Projects India Limited (TPI) is a 100% FDI (Foreign Direct Investment) company. The company undertakes all its projects with an end to end approach.

Backed by a team of professionals, TPI aims at providing both high quality housing and plots at fair market value.

All TPI projects offer eco friendly features in the form of open green spaces, rain water harvesting system, water recycling and usage of solar power and other forms of renewable energy wherever feasible.

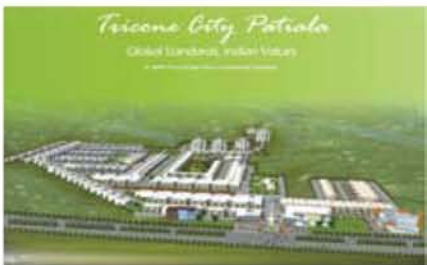


SITE PLAN

Other Ongoing Projects



Garden View

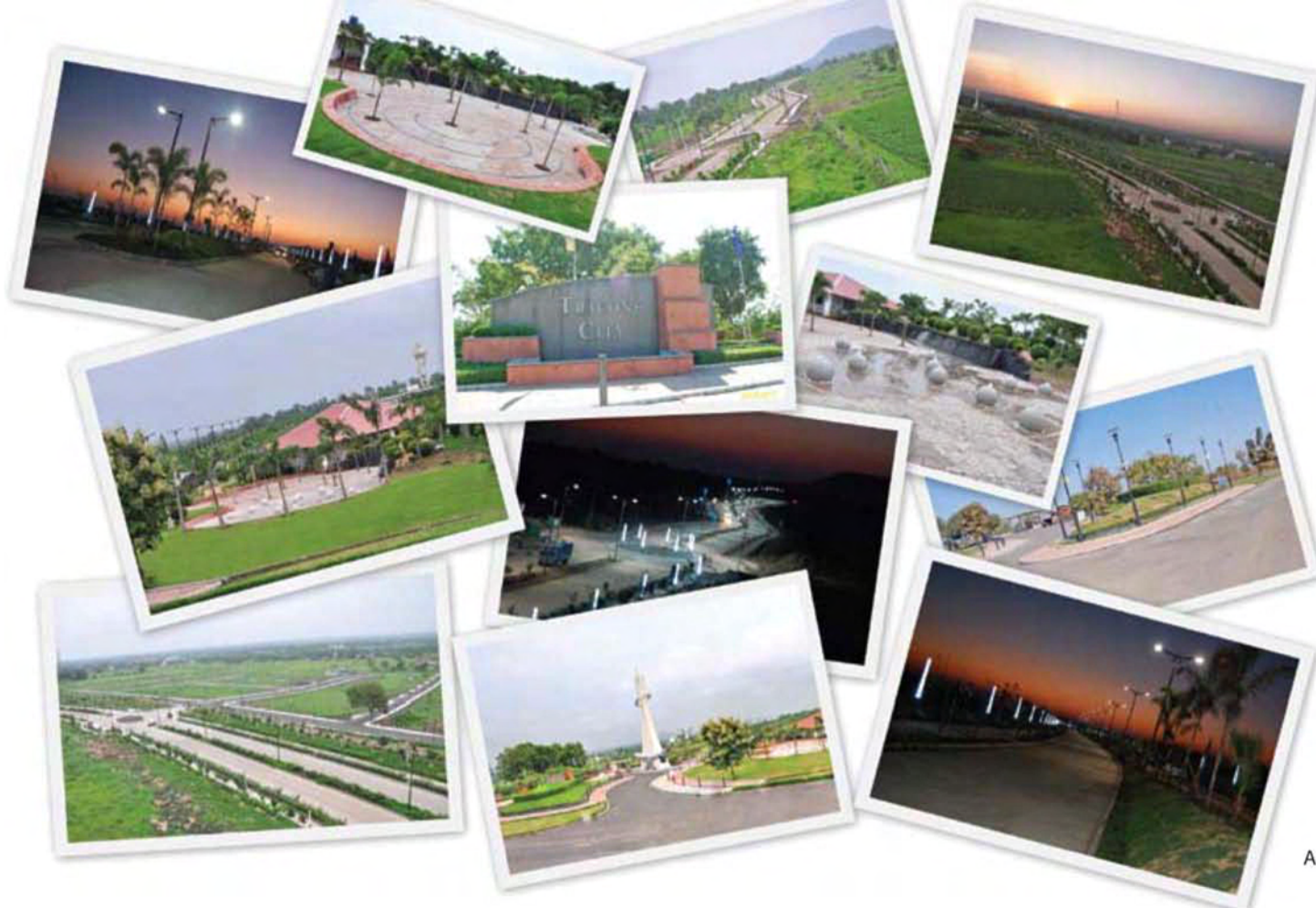


Tricone City, Patiala



Location plan





Actual site photographs

Corporate Office

1702 & 1702A, 17th Floor,
Tower B, World Trade Tower,
C1, Sector - 16,
Noida - 201301 Uttar Pradesh
India
Phone: +91-120-6205900, 901

Indore Office

CITY:
605, 6th Floor, NRK Biz Park
Plot No - 397 & 405, PU-4,
Scheme No.-54, Vijay Nagar Square,
Behind C-21 Mall, Indore MP, India, Pin Code - 452001
Ph : +91-731-4079444.
SITE:-
Khandwa Road, Datoda,
Tehsil Mhow, Indore, (MP), India. Pin Code : 452020
Ph : +91-731-4079444.

Patiala Office

10th Milestone
Hardaspur, Srihind Road,
Near Laxmibai Dental Hospital,
Patiala (Punjab), India
Pin Code : 147001
Ph : +91-175-2680441

Website : www.tpilindia.com

Disclaimer : The content of this brochure is purely conceptual and have no legal binding. The developers reserve the right to amend layout, plan, elevation, colour schemes, specifications and amenities without any notice or intimation.